

Community News for White Waltham and Woodlands Park

Welcome to this new electronic edition of Community News for our local area of White Waltham and Woodlands Park.

In each edition we hope to bring you news from our local area and what's going on at White Waltham Church. You'll find other features and advertising for local businesses too - please do support them.

If you have an article or advert you would like included, please get in touch. Details are on the final page.



Vicar's letter

Dear Friends of the Parish of White Waltham with Woodlands Park,

November seems to have rushed in... and the weather, certainly, was uninvited! This has been exacerbated for us because, as a family, we have had a strange 3 weeks with positive covid tests, disrupting plans and enforcing isolation. It has been tricky working out what is best to do, and what to delay: when you are legally allowed to be out and about, double-jabbed and testing negative, but also want to love your neighbour and bring confidence to the anxious. Perhaps you have had to make similar decisions, finding restrictions frustrating whether enforced or self-imposed, or even finding freedoms fearful, worried about the amount of 'normal life' which can go on.

What we are all finding is that our particular challenges can seem to get bigger and harder to see past, but when we gain some sort of perspective we are helped greatly to deal with our own situation.

Similarly, as COP26 has started in Glasgow, there are mixed reviews and pessimism mixed with optimism; it is proof that humanity may contain seeds of hope but it certainly has seeds of its own destruction! Will we make hard, sacrificial decisions, being prepared to pay more and work harder now in order to reduce the amount of damage we are doing?

The biblical perspective tells us that we are indeed responsible for caring for this world, even as we dominate it and work it like no other species – made

in the image of God, yet given to rebellion and selfishness. We need someone to come in alongside us; we cannot do it ourselves (as much as, in our better moments, we would like to think we can).

Facing all these questions we need God's true perspective on our own lives. A perspective, shown clearest at the cross of Jesus, which both humbles us (we need a rescuer) and lifts us up (we are loved so much). A true perspective that confronts us with the reality of our spoilt situation and gives hope: beyond frustrations, beyond fighting, beyond illness, beyond death, to a full life now and forever.

There are some big opportunities for gaining perspective coming up, in which you may be interested:

- **Remembrance Sunday** – remembering not only those who died in wars, but also the fact of wars themselves, a chance to remember our common humanity and pray for peace.
- **Service of Remembrance and Thanksgiving** – on the evening of 14th November (see page 4 for more details). Remembering those we have lost and looking to the one place of hope when facing death: Jesus the one person who went through death, and promises a safe passage for those who follow Him.
- **Christmas services** (yes, I can't believe I am having to plan them already either!) – from Christingle (28th November) to carols (Christmas week), with the nativity story of a baby that continues to change the world. These are always wonderful opportunities to pause, take our eyes off ourselves, ask the bigger questions, and receive the most wonderful free gift from a loving Father God. We need this perspective!

As the season gets darker, come along to a Sunday service, or just be in touch; let's help each other find the peace, joy and hope in the perspective of our loving Father God.

Dave

Rev Dave Atallah

Tel 01628 822000, Email waltham.vicar@btinternet.com

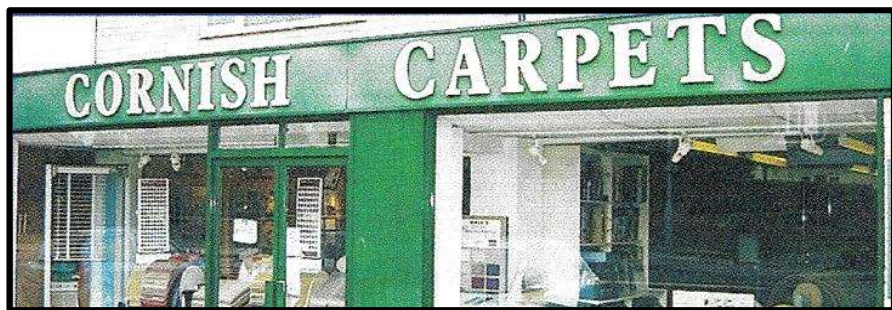
From the Registers

Cremation

1st November

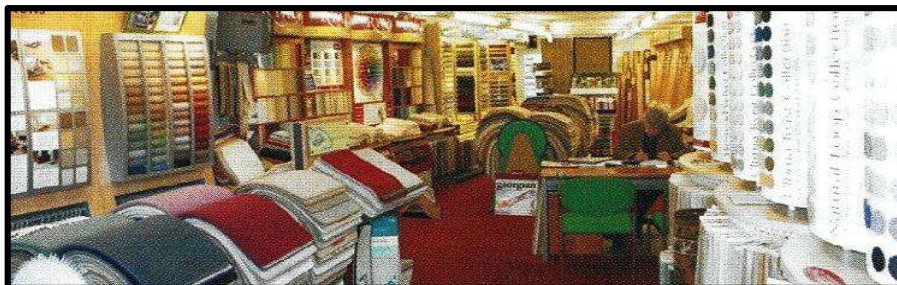
Frederick Alfred Hill

aged 93 years



Family business since 1962 – 59 years!

- All stock rolls at greatly reduced prices
 - All major makes supplied
- Roll ends and remnants priced to clear
 - FREE estimating and planning
 - Expert fitting service available



**Cornish Carpets, 9 Waltham Road,
Woodlands Park, Maidenhead SL6 3NH**

Tel: 01628 824555

e-mail: getintouch@cornishcarpets.co.uk

website: www.cornishcarpets.co.uk

CORNISH CURTAINS Tel: 01628 824222

Call for a no-obligation quote or design advice

Service of Remembrance & Thanksgiving

Sunday 14th November at 6.30pm

For all who have lost a loved one

This quiet, reflective service provides the opportunity for us to remember those we have loved and lost, and to give thanks for all that they did for us while discovering the difference that Jesus makes.



This year's **Remembrance Sunday Service** is on
Sunday 14th November at 10.30am
followed by a short Act of Remembrance at the
War Memorial in White Waltham

Please book via www.stmaryswhitewaltham.org.uk/booking
to come to Remembrance Sunday Service in church.

WHITE WALTHAM GARAGE LTD

WHITE WALTHAM. MAIDENHEAD. BERKS. SL6 3SG
TEL: 01628 823234

REPAIRS & SERVICING

(All Makes and Models, inc. 4 x 4s)

Special Offers on Services

AIRCON RE-GAS from £60.00 + VAT

M.O.T. TESTING STATION

DIAGNOSTIC TESTING

FULL RANGE OF TYRES SUPPLIED & FITTED

LARGE SELECTION OF QUALITY USED CARS

PART EXCHANGES WELCOME

OPENING HOURS

Monday to Friday 07.30 - 17.00

Saturday Car Sales 09.00 - 17.00

Sunday Car Sales 11.00 - 16.00

YOUR LOCAL INDEPENDENT GARAGE

Website: www.whitewalthamgarage.co.uk



GOING ON HOLIDAY? OUT AT WORK?

**The Answer to Professional Pet Care
in your own Home.**

Professional, friendly, flexible, reliable &
tailored pet care services. Registered,
Insured, Police Checked, Uniformed Staff.

**Dog Walking, Cat/Small Pet Visits
Home and Pet Sitting
Pet Home Visits
Pet to Vet-Pet Taxi
Pet Friendly Vehicles
All Animals catered for**

**Call Ron on 01628 627948
maidenhead@petpals.com**



**General building, Extensions
Kitchens & Bathrooms, Roofing
Carpentry, Plumbing, Plastering**

No job too small

Professional & reliable - Reasonable rates - Free estimates
- Fully insured - References and photos available

Robert Cox

bocedevelopments@gmail.com

Home: 0118 934 3613

Mob: 07850 057249

DAVID SHAILES PLUMBERS & DECORATORS

**Showers, Baths,
Sinks, Repairs,
Cylinders, Immersions,
Taps, Washers, Pumps,
Bathroom Suites, Toilets,
Basins & Radiators fitted.
Full Interior & Exterior
Decorating.**

**Reliable & Clean.
Find us on Facebook.**

i.plumber@btinternet.com

Phone: 0770 8602442

Children are always welcome at White Waltham Church!

Children are invited to join our services with their parents.
Services are now taking place live from the church building.
Children's activities have also resumed so please do join us.

To come to one of our services in person please book via [this link](#).

You and your family are very welcome to join us!

You can catch up on previous Sunday morning children's activities at:
www.stmaryswhitewaltham.org.uk Just scroll down the home page, click on 'Families Area' and choose 'Watch our Sunday Children's Sessions'.



Easy Su Doku

		8		6		1		
		5						
6		7			1	8	4	5
7		9	8			1		
3	8	2		5		6	9	4
		1			9	5		7
5	9	6	7			2		1
						4		
	1		9			7		

© 2008 KrazyDad.com

Medium Su Doku

				1				2
8		1	5					
	3			8			6	
			2			1		6
	6						7	
5		4			1			
	9			7			2	
					6	7		4
6				9				

© 2008 KrazyDad.com

Your local churchyard needs your help!

If you regularly visit White Waltham Churchyard you know what a great job our churchyard team does to maintain it. This year, with the wet weather and ill health of some team members, our regular churchyard team is now just two people – so we need your help more than ever!

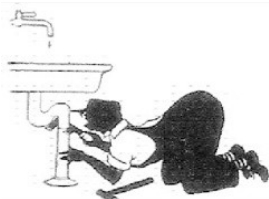
***Could you help to mow or strim in our churchyard
– either on a regular basis or as a one off?***

Call Bob on 01628 676117 or email bobcrittenden@aol.com

P.J PLUMBERS

24hr Service

P.j.plumbers@live.co.uk



**FOR ALL YOUR
PLUMBING NEEDS**

**01628 822942
or 07983 145458**

A festive poster for the 'Santa Dash' event. At the top, there's a blue sky with snowflakes and a cityscape. Below that, a group of people in winter gear are running on a path. A large, cartoonish Santa Claus is running towards the right. The text 'Alexander Devine's SANTA DASH' is prominently displayed in the center. Below that, a blue banner reads 'Berkshire's best Santa Dash is back in Windsor!'. The date 'Sunday 28 November 2021' is written in white on a red background. Further down, it says 'SKM your way... Run it, walk it, jog it, dance it and even join the fun from home!'. At the bottom, it encourages signing up to support specialist care for seriously-ill local children and families. Social media icons for Facebook, Twitter, and Instagram are shown, along with the website 'www.alexanderdevine.org/santadash'. A small vertical credit 'Dag County Press' is on the right edge.

Alexander Devine
Children's Hospice
Service

Alexander Devine's
**SANTA
DASH**

Berkshire's best Santa Dash is back in Windsor!

Sunday 28 November 2021

SKM your way... Run it, walk it, jog it, dance it
and even join the fun from home!

Sign up today and help us continue to bring specialist
care, support and laughter to the seriously-ill local
children and families that need us.

www.alexanderdevine.org/santadash

Dag County Press

FOREST GREEN MOTORS & TRAILERS

CAR SERVICING, REPAIRS & DIAGNOSTICS

To most makes and models from small services to brake overhauls
MOTS arranged, fitting of batteries, bulbs and wiper blades

APPROVED MEMBER OF RMI & TRUST MY GARAGE

TRAILER SERVICING & REPAIRS

Parts and trailer accessories
We also supply and fit towbars and towing electrics

**UNIT 4, MANOR FARM, MANOR FARM ROAD,
SHURLOCK ROW, READING, BERKSHIRE. RG10 0PY
TEL: 01189 34 33 79 or 07778 21 77 41**



2021 Season Review and Awards

It was a tight season for the 1st XI who finished 5th in Division 3a. After spending time at the top of the table in June in a very close fought league the 1st XI eventually ended up mid table with only a handful of points separating the teams above. There was lots of potential shown during the season and we will look to build on this for 2022.

The 2nd XI have taken an administrative relegation from 6b. Finishing 8th out of 10 in Division 6b and outside of the traditional relegation zone, they will be playing in Division 7 in 2022 due to other teams entering the Thames Valley Leagues in the above divisions. We will take this opportunity to help bring through some budding young cricketers as we aim for promotion back to Division 6 next season.

The 1st of October was our awards dinner hosted by our sponsor, The Beehive. The night was a great success and something we missed in 2020 due to COVID. The winners on the night were:

1st XI & 2nd XI

POTY: Cloudesley Long and Mike Chapman

Leading runs: Nikhil Jathavedan 567 runs, Mike Chapman 470 runs

Leading wickets: Cloudsley Long 41 wickets, Luke Beard 25 wickets.

Young Player of the Year: Daniel Hubbard

Recruitment

We are always seeking new players and social members to join our club. There is lots on offer for players of all ages from our All Star's aged 5 to seniors who can't remember their age...! With junior teams to accommodate all ages, a senior Sunday social side and 2 competitive league teams we have something for everyone.

Please contact us through the website or Facebook for more details.

Sponsorship

The club are open to new sponsors for the 2021 season. If you are interested in supporting your local team, please contact whitewalthamcc@sky.com

Website: www.whitewaltham.play-cricket.com

Facebook: @WhiteWalthamCC

Twitter: @WWCC_1879



Little Roots Baby & Toddler Group

For babies and toddlers with their parents/carers

We meet between 9.00 & 11.15am on Mondays during school term time. Come when you can, go when you must – we have a range of toys out for free play, Bible story time and music, and for the time being please bring a snack - we plan to provide snacks again in due course, once Covid regulations are relaxed further.

We meet in The Tree House, which is located in the churchyard at White Waltham Church. Some parking is possible at the bottom of Church Hill, and more spaces are available in the yard of Bury Court Antiques (Alistair Price).

We would love to see you!

 Little Roots Toddler Group
www.stmaryswhitewaltham.org.uk



***Little Roots starts again in September,
in the meantime keep up to date via the Facebook group.***

Want some financial help with your education?

Have you left school?

Are you thinking of full-time training or education?

(apprenticeship/College, university etc.)

or are you already there?

If you are under 25 and live in the civil parishes of Shottesbrooke or White Waltham, or the south ward of Hurley ... then the Duell and Hawes Educational Trust may be able to help you with a grant.

Write to: Clerk to the Trustees, Carolyn Thompson,
Spire View, Waltham Road, White Waltham, SL6 3SG

or email: carolynt52@icloud.com

for an application form

Shottesbrooke and White Waltham Charities

Clerk – Carolyn Thompson

07834 545967 carolynt52@icloud.com

Shottesbrooke and White Waltham Welfare Fund

This fund was established by the Charities Commission in 1912 to help those living in the 'area of benefit' (the Civil Parishes of Shottesbrooke and White Waltham and the Ward of South Hurley).

How we can help

The Charity income may be used to help generally, or to help individual people living in the 'area of benefit', who are in conditions of need, hardship, or distress. It can do this by making grants of money or by providing or paying for items, services, or facilities.

Restrictions

The trustees cannot help pay for rates, taxes or other public funds. However, it may use its funds to add to help that is already being provided out of public funds.

Each application for funding will be considered separately. Applications that are successful on one occasion may not be successful in future.

*If you believe you would qualify for funding,
please get in contact with the clerk by email (carolynt52@icloud.com)
or telephone (07834 545967)
and you will be contacted by your local Trustee.*

A letter of support will be required from:

A Social Worker

A Vicar/Priest

A Head Teacher

or another official body.

Want to advertise in this publication?

Contact Bob Crittenden

Tel. 01628 822000 or email waltham.vicar@btinternet.com



Cycling Shop

SAM'S BIKE SHOP



**Moss End Garden Centre,
Warfield, RG42 6EJ**

Many makes of bikes, spares and accessories
Come and visit us for all your cycling needs.

Free parking

Phone 01344 360922

samsbikeshop@outlook.com

Sponsors of the Andrew family on their successful
1,147 mile Project Rainbow Cycle Ride around Britain in 2011

Bring this advert to get 10% off!

The Village IT Service

No job too small or too large



Home users and small businesses in the White Waltham,
Shottesbrooke, Woodlands Park, Binfield and neighbouring areas.

At your office or home.

One-to-One personal tuition, Advice, Set-up and Installation.

*PC Health-Check, Tune-Up, Virus & Spyware, Data Recovery, Email &
Office, Broadband, Wired & Wireless Networks, Skype/VOIP & Webcams.*

Microsoft Windows 10, 8 and earlier versions.

Smartphone and iPad/Tablet advice, set-up and integration.



Katie Sarsfield, Tel: 0118 932 0061/07981 600726

Waltham St Lawrence based

katie@kimservices.co.uk

Little Red Hen Nursery

- Open from 7.30am – 6pm
- Childcare from 3 months – 5 years
- Flexible hours for children to attend
- Open 51 weeks of the year
- All day from £64 per day, or morning or afternoon sessions from £30.
Prices vary on age of child.
- Prices are all inclusive of nappies, wipes, fresh meals, snacks and sun cream for all children.



10% off new sign-ups for November & December
when you sign up in November. Terms and Conditions apply

enquiries@littleredhennursery.co.uk

01628 290 404 / 07549 333 669



Our home from home nursery accommodates the individual needs of children aged between 3 months and 5 years. We offer a total of three bright, airy, age-appropriate rooms, consisting of our Baby, Toddlers, and Pre-School room. We also have a large bespoke outdoor play area, designed to capture the children's vivid imaginations, and offer ample learning opportunities.
Come and see for yourselves!

**Unit 3 – 5, Grove Business Park, Waltham Road,
White Waltham, Maidenhead, SL6 3LW**

Services at White Waltham Church

Services are now taking place live in Church. To join us in the church building please book via the website at [this link](#).

Services are also available via Zoom for those who need to stay at home: <http://www.stmaryswhitewaltham.org.uk/zoom>

They can also be watched via our website:

www.stmaryswhitewaltham.org.uk

Scroll down the home page and click on 'This Sunday's Service' (*you can also catch up on previous services from this page*)

Some other content is available on our Facebook page

 **White Waltham Church**

We hope you can join us!



Community News for White Waltham & Woodlands Park

Published every 3 weeks or so, and available on White Waltham Church's Facebook page and website:

 **White Waltham Church**

www.stmaryswhitewaltham.org.uk

If you have news about something going in our local community that you would like to be included please email:

waltham.vicar@btinternet.com